

PREMIUM HOUSE AND LAND

\$405,000



Pollozhani
Homes

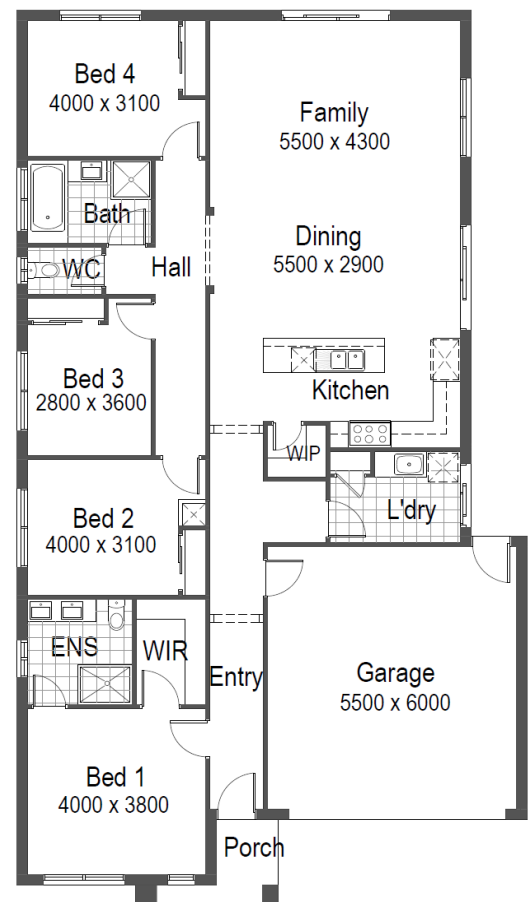
Built better. Live better.



Lot 528 Adoquin Circuit, Doreen.

- Fixed site costs.
- 2720mm Ceiling heights.
- Ducted heating and Evaporative cooling
- Optional quality flooring throughout.
- 40mm stone benchtops to kitchen.
- 20mm stone benchtops to ens and bath.
- 900mm Venini Upright Cooker.
- 900mm Venini Stainless steel canopy.
- Owners selection of internal colours.
- Fencing included
- Coloured concrete driveway

Land size – 350m² House size – 21.98sq



Sergio – 0416 485 536



sergiomasini@grenvilleproperty.com



www.pollozhanihomes.com

Pollozhani Homes reserve the right to change price without notice. Floor plan and façade subject to developer's approval. Façade image is for illustrative purpose and which contain upgrade options from Pollozhani Homes. Upgrades not included in pricing include landscaping items, planter boxes, retaining walls, water features. Lighting, screens, pergolas and decorate landscaping including fencing. The price does not include transfer duty, settlement costs or any other fees or disbursements associated with the settlement of the land.